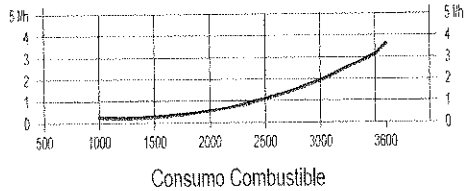
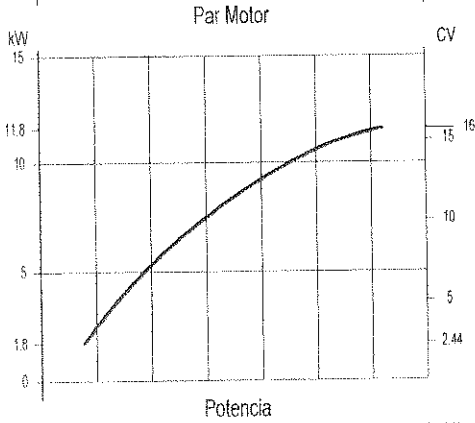
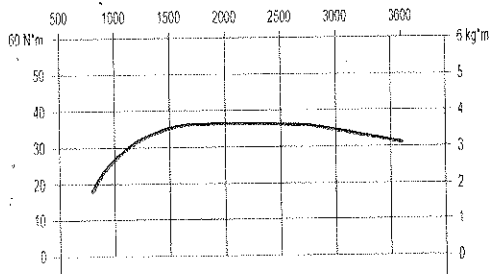
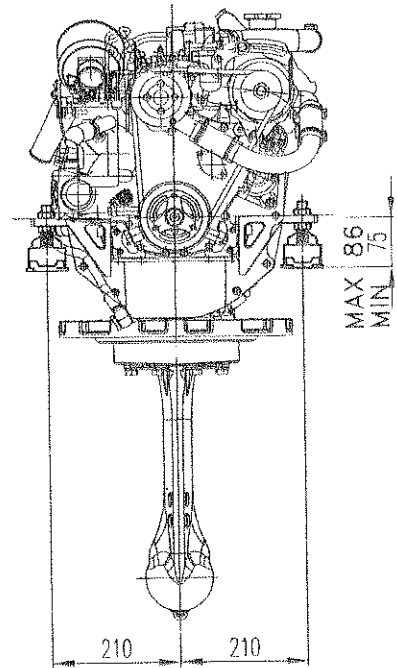
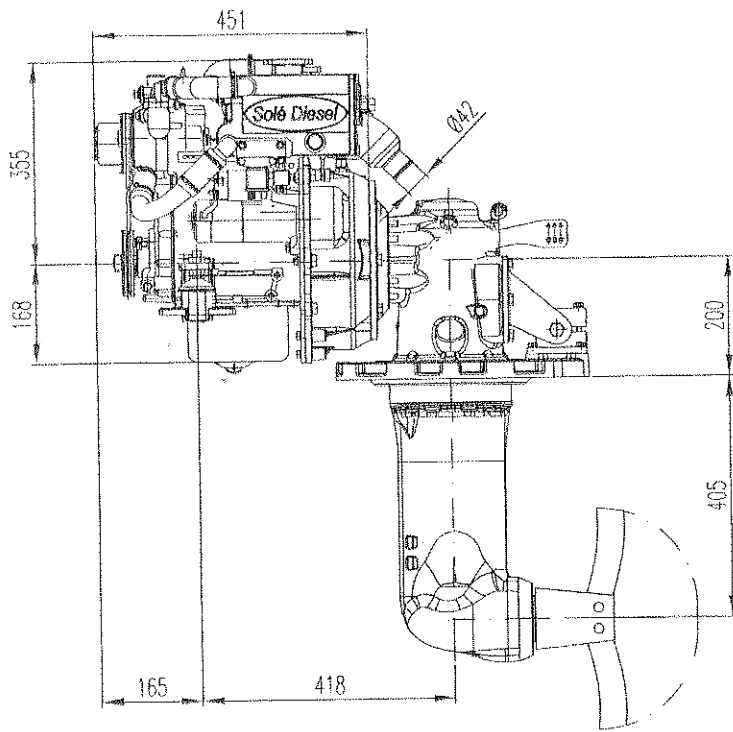


MINI 17 - SAIL DRIVE



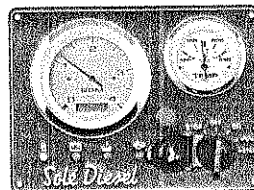
Tipo	Diesel, 4-stroke
No. of cylinders	2 - in line
Diameter x stroke (mm)	76 x 70
Total displacement (c.c.)	635
Compression ratio	23:1
Maximum output	16 HP (11.7 kW)
Continuous output	---
Maximum r.p.m.	3600
Injection system	Indirect
Cooling system	Fresh water cooling with heat exchange
Electrical system	12V - Starting motor 1.2 kW Alternator 40 A
Seawater hose - inside diameter	Ø20 mm
Fuel hose - inside diameter	Ø6 mm
Leak off fuel hose - inside diameter	Ø5 mm
Standard Panel Dimensions	200 x 150 mm
Optional Panel Dimensions	250 x 150 mm
Sail Drive Ratio	SPROP60 (TechnoDrive) 2.2 : 1
Maximum diameter propeller	15"
Rotation	Left (LH)
Plastic Bed not available	Yes
Available to turn 180° the SDrive	Yes
Engine weight (without propeller and bed)	126 kg

Standard equipment:

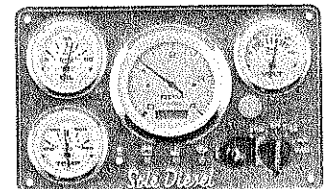
- Electrical starter, alternator, electrical stop and cabling assembled on the engine.
- Instrument panel.
- Engine rubber mounts.
- Oil sump pump.
- Owner's and part list manual

Optional equipment:

- Water filter.
- Diesel filter with separator.
- Remote controls.
- Propellers: 2 bladed folding and 3 fix bladed.
- Exhaust system.
- Front pulleys - power out.



Standard Panel



Optional Panel



SOLE, S.A.
 Ctra. de Martorell a Gelida, km 2
 08760 Martorell (Barcelona)
 Tel. 93 775 14 00 - Fax. 93 775 30 13
 Tel. Recambios 93 775 44 05

WEB [http:// www.solediesel.com](http://www.solediesel.com)
 DTEC_M17_07A

